

PHENOM SINGLE MOUSE INSTALLATION GUIDE

As of Phenom Software version 4.3, a new feature has been added to operate both the Phenom and the Pro Suite system with a single mouse/keyboard combination.

I. TECHNICAL BACKGROUND

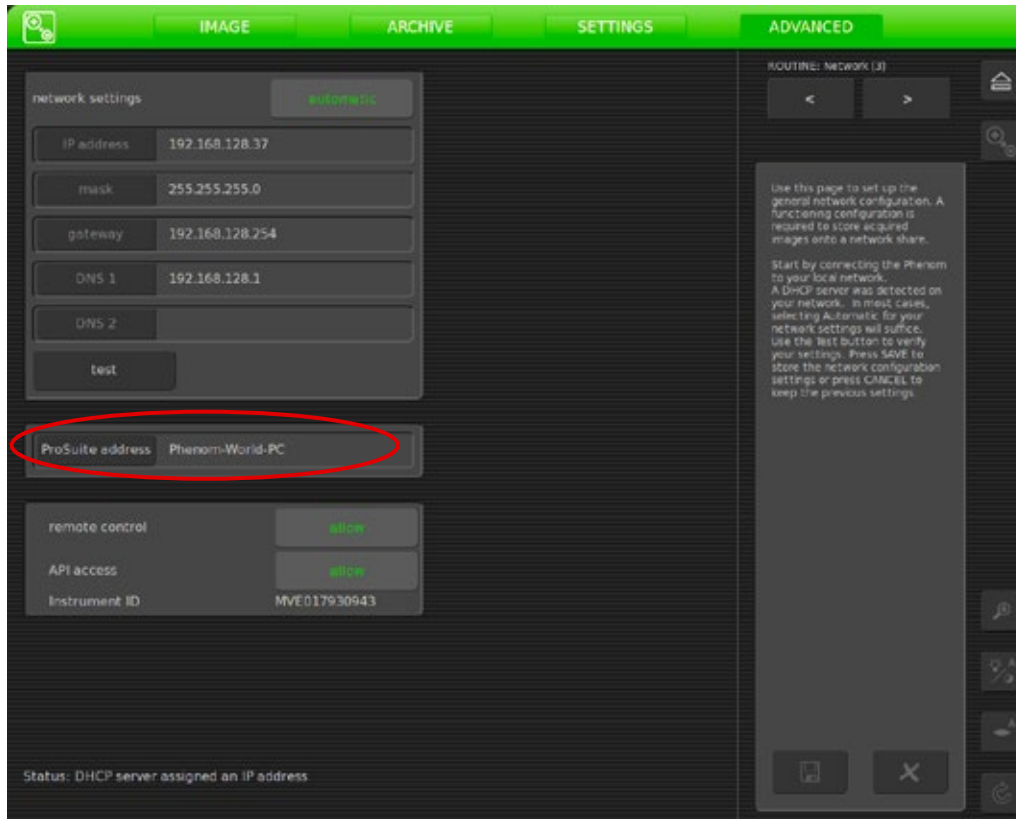
We use software called “Synergy” to share the keyboard/mouse between the Phenom and the Pro Suite PC. The Pro Suite PC is configured as the “server” (so the mouse and keyboard must be physically connected to the Pro Suite PC) and the Phenom as the “client”. The keyboard/mouse data is sent from the Pro Suite PC to the Phenom via the network.

2. INSTALLATION

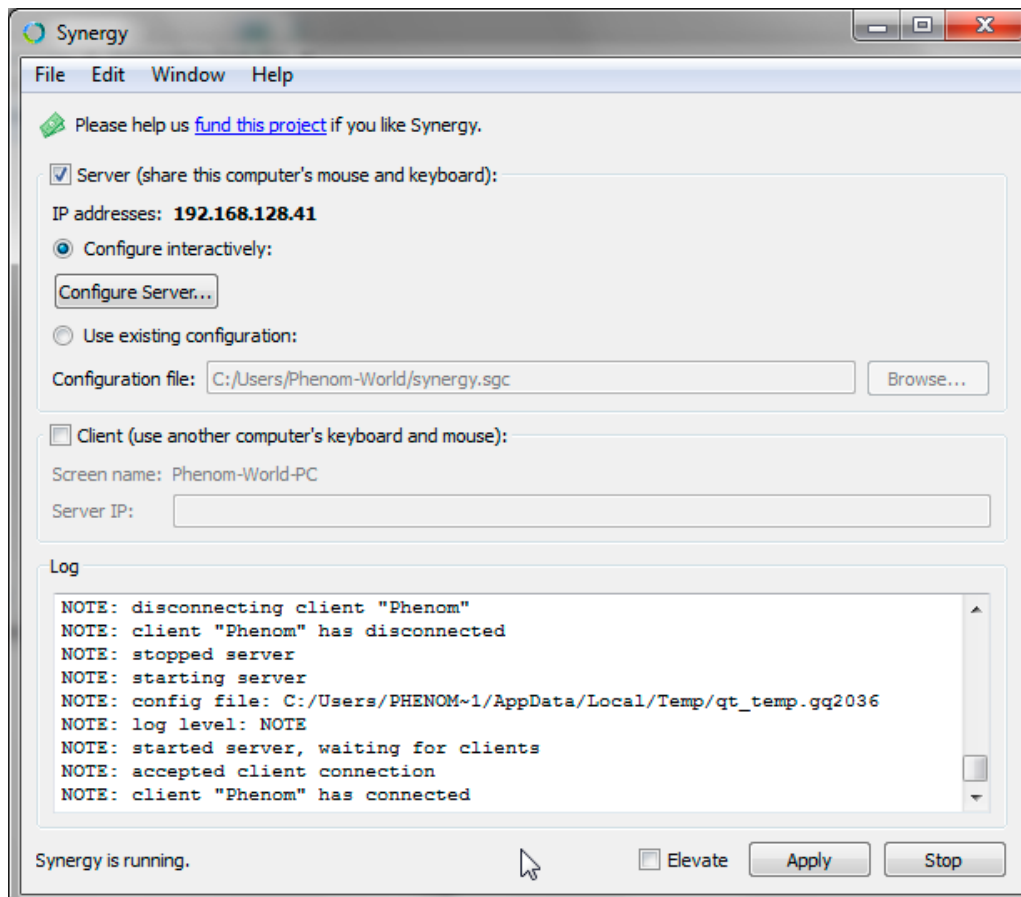
The Synergy client is part of the Phenom software as of version 4.3, and does not need to be installed manually. On the Pro Suite, the Synergy software is part of the Pro Suite Framework version 2.2 and up. You can manually install a version of Synergy on the Pro Suite PC; the current version as of writing this document is 1.4.17.

3. CONFIGURATION

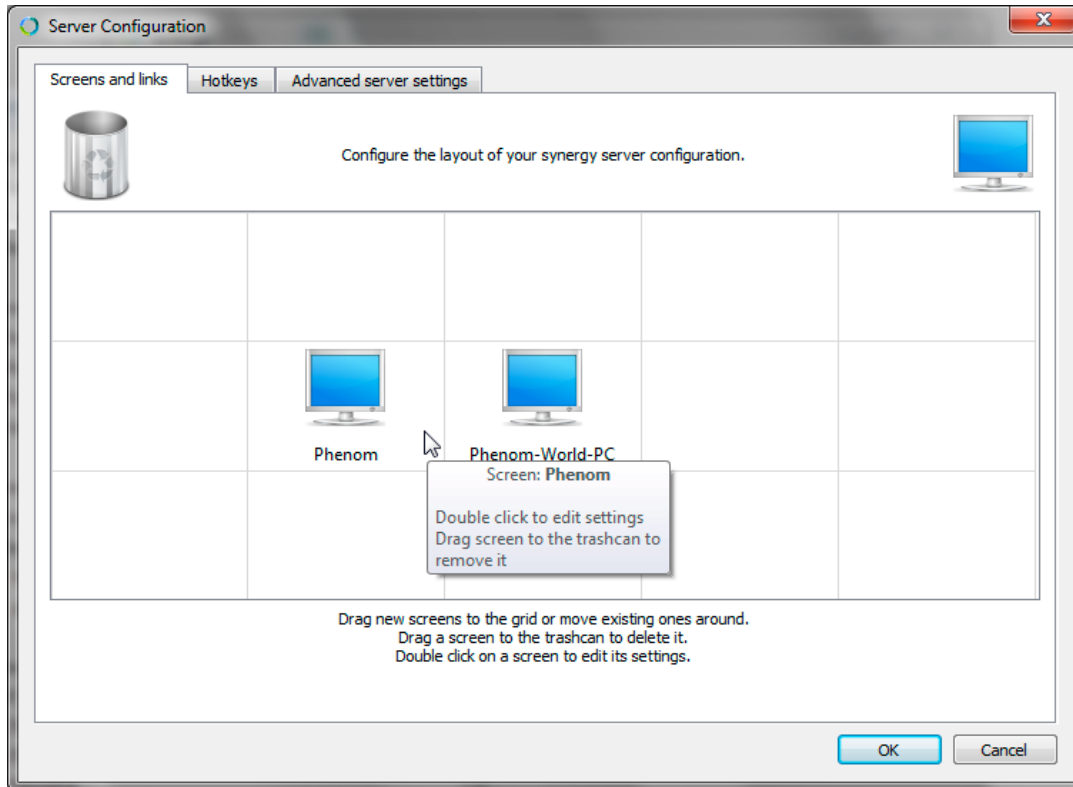
For Synergy to work, both the client and the server need to know where to find each other. On the Phenom, the “Pro Suite address” must be configured. This can be found on the Advanced/Network (3) page (see the illustration below). You can fill in the IP-address of the Pro Suite PC, but (WINS) name resolving also works and the default computer name of the Pro Suite PC (“Phenom-World-PC” is filled in already). In case the computer name of the Pro Suite PC is changed, the matching name must be filled in and the network settings must be saved.



On the Pro Suite PC, The Synergy application must be configured as “Server”:



The software must also be made aware of the physical location of the screens. You can configure this via the “Configure Server...” button. This opens a new window where you can configure whether the Phenom screen is to the left or to the right of the Pro Suite PC.



4. OPERATION

Once the system is configured, Synergy will auto-startup on the Pro Suite PC every time the system is booted, and the Phenom client will connect to it. When you move the mouse pointer off the side of one monitor, it will appear on the adjacent one. The system which currently has the mouse cursor will also receive key presses from the keyboard.